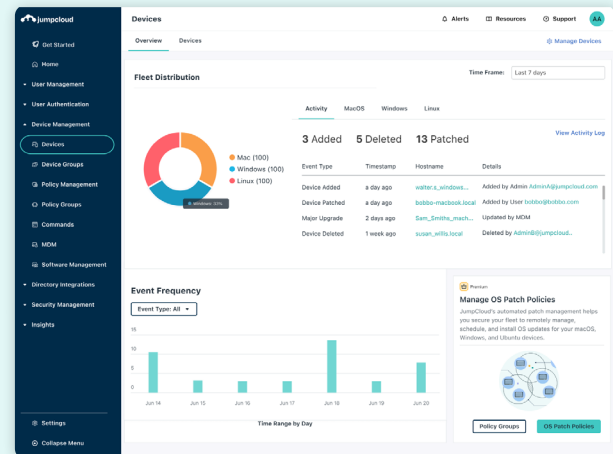


# JumpCloud Patch Management

**JumpCloud Patch Management** enables you to easily create **schedules** and **manage patching** for your entire fleet of devices (macOS, Windows, and Ubuntu Linux) as well as Windows applications in a single console. This empowers you to achieve greater **visibility**, **automation**, and **reporting** while strengthening your devices' security posture and meeting your organizational compliance needs.



## Gain Overall Visibility and Reduce Security Vulnerabilities

### One Console for All Your Patch Updates

Centralize management of all your Windows, Mac, and Ubuntu Linux devices and Windows applications patch updates (within one cloud console) for easy and better management.

### Better Visibility & Easy Tracking of Patches & Updates

Provide visibility on OS and Windows applications patches updates, status, and version control to ensure nothing is amiss.



## Automate and Efficiently Rollout Patch Updates at Your

### Strategize Effectively and Efficiently

Create an effective and practical plan to roll out your patches, taking into consideration your organization's time, resources, and needs.

## Eliminate Manual Work

Define and automate specific rollout schedules as needed for Windows (both OS and Microsoft applications), macOS, and Ubuntu Linux. Quickly add, edit, or remove schedule entries as needed.

## Flexible Options

Customized actions or notification settings to all or targeted groups or enforce automatic updates.



## Strengthen Your Device Security Posture at All Times

### OS and App-Centric Protection

Improve your devices' security with the latest OS and Windows-based applications patches and updates at all times, with minimal IT effort. Because old software is inherently less secure, timely updates to both the OS and its applications minimizes potential system vulnerabilities due to outdated software.

## Streamline Reporting

Easy access to reporting to demonstrate compliance to common standards such as SOC 2, HIPAA, and NIST.

## Key Features of OS Patch Management

- **Patch visibility dashboard** with fleet OS distribution and current OS release trains.
- **Automatic macOS updates policy** to set and enforce automatic updates, control when devices can see available upgrades and updates, and determine deferral options.
- **Advanced Windows updates policy** with new controls for automatically installing and enforcing Windows updates.
- **Automatic Linux updates** for major and/or rollup Ubuntu releases and the ability to defer them.
- **Centralized view** of policy configuration and recommended settings.
- **Centralized Windows KB dashboard** to monitor and manage Windows updates from one place. Pick specific patches to install and drill down to see the status of every individual device.
- **Leverage Apple's latest Declarative Device Management (DDM) protocol** to deliver native OS patching for macOS, iOS, and iPadOS. Specify exact OS versions and builds to ensure a precise installation schedule.

## Key Features of Windows Application Patch Management

- **Automatic application updates policy** with new controls for automatically installing and enforcing Windows apps updates, as well as applying a 7 day grace period with notifications for end-users.
- **Automatic notifications** to end-users about new Windows application updates.
- **Centralized view** of applications and their versions.

### Interested in learning more?

Contact your JumpCloud Account Executive or Account Manager.

### Need Help Getting Started?

JumpCloud's Professional Services Team is here to support you along the way. Whether you need implementation assistance or hands-on engineering support, there's a service package for you.

[Learn more and find the right service level for your business today.](#)

JumpCloud® delivers a unified identity, device, and access management platform that makes it easy to securely manage identities, devices, and access across your organization. With JumpCloud, IT teams and MSPs enable users to work securely from anywhere and manage their Windows, Apple, Linux, and Android devices from a single platform.



**Get Started**